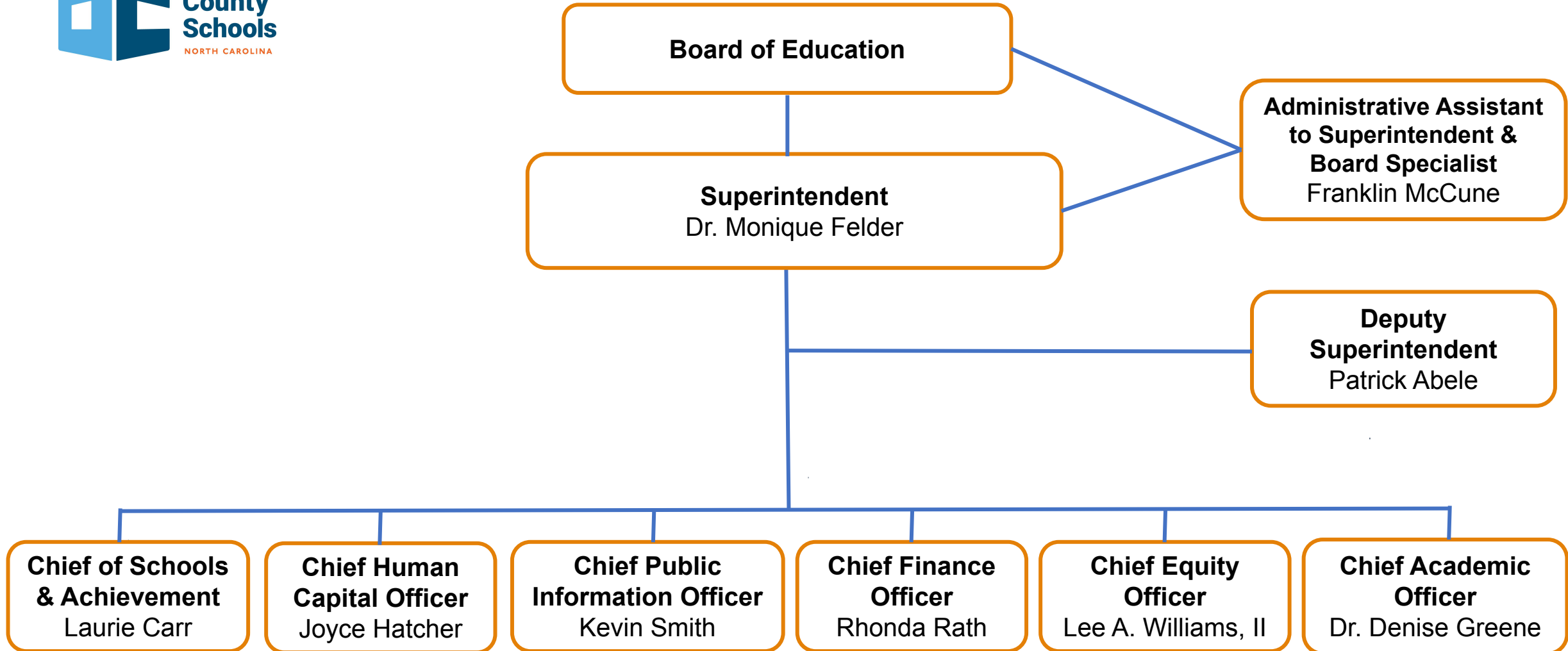


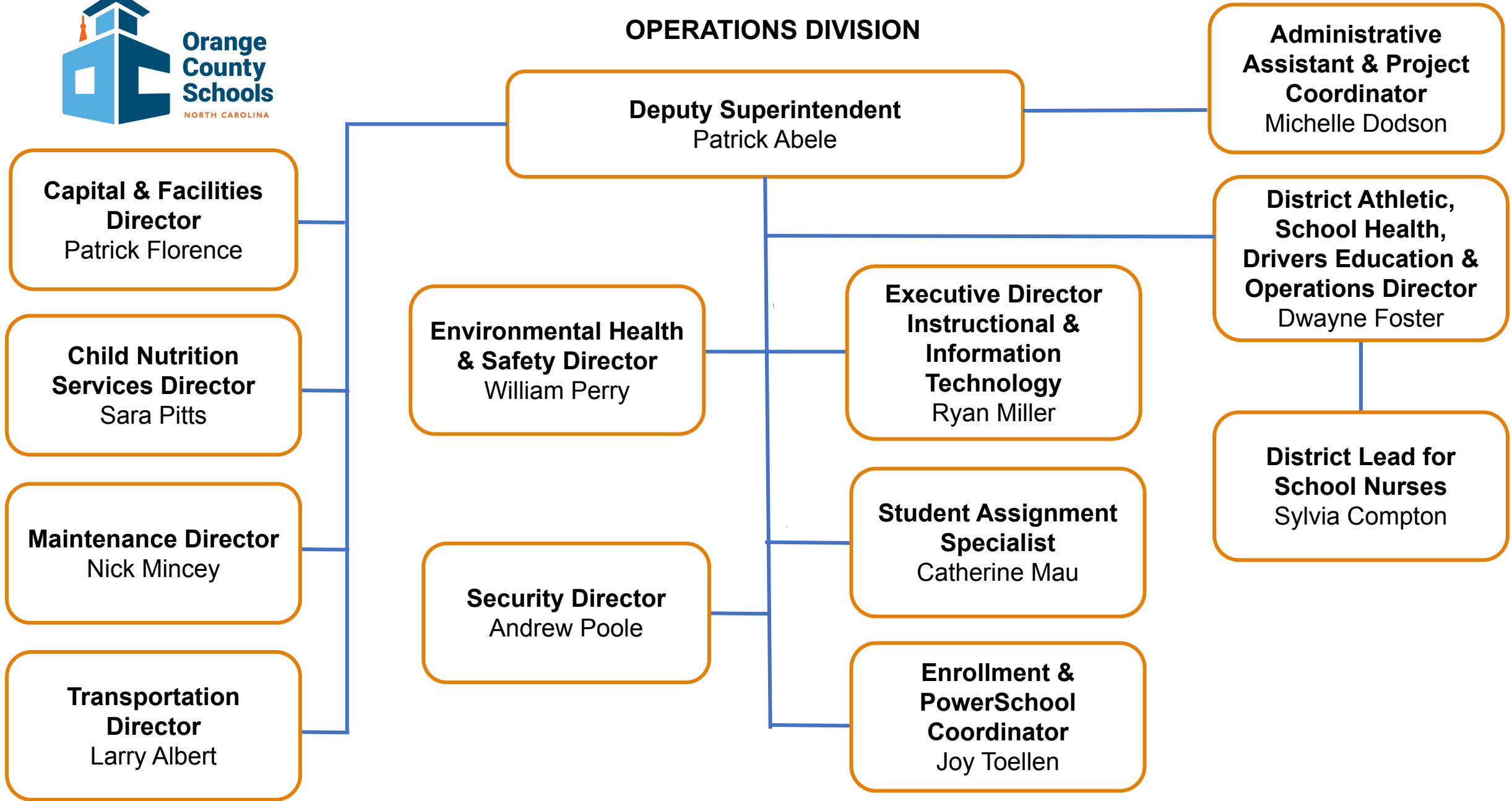


OCS Organizational Chart





OPERATIONS DIVISION





SCHOOLS & ACHIEVEMENT DEPARTMENT

- 13 School Principals**
- Elementary Schools
- Central
- Efland-Cheeks Global
- Grady A. Brown
- Hillsborough
- New Hope
- Pathways
- River Park
- Middle Schools
- A.L. Stanback
- Gravelly Hill
- Orange Middle
- High Schools
- Cedar Ridge
- Orange High
- Partnership

Chief of Schools & Achievement Officer
Laurie Carr

Administrative Assistant & Project Coordinator
*Katharine McCune

Director of After School Programming
Tammorah Mathis

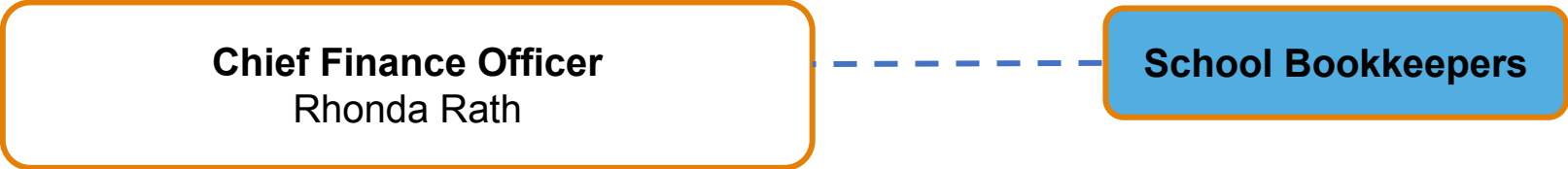
Program Specialists
Katherine Kirby
Harriet Watkins
Wayne Winstead

Staff indicated in blue directly support schools.

*position shared with Chief Academic Officer

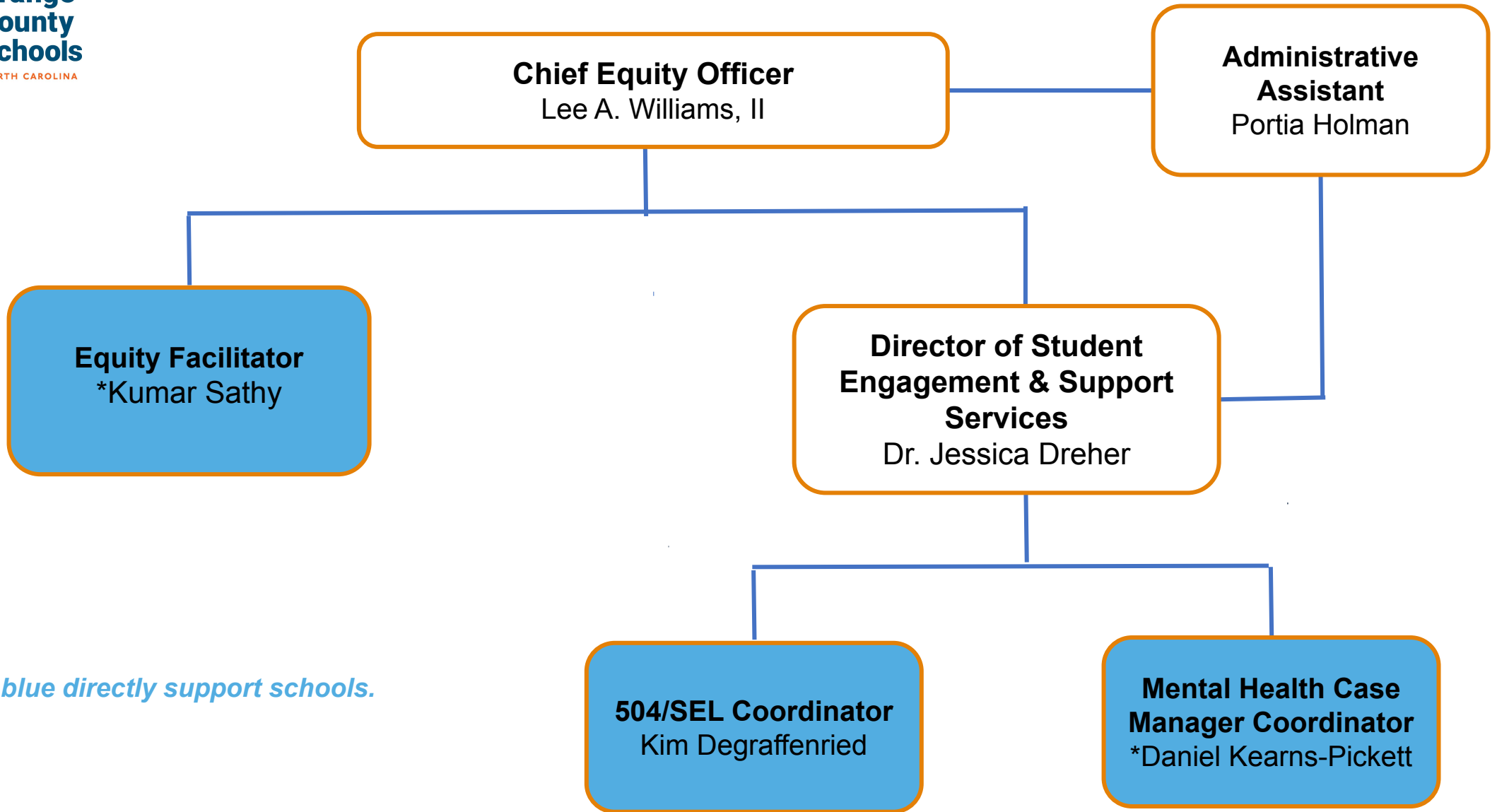


FINANCE DEPARTMENT





EQUITY and STUDENT ENGAGEMENT & SUPPORT SERVICES DEPARTMENT



Staff indicated in blue directly support schools.

*Currently in a school-based position until current school-based position is filled.



CURRICULUM & INSTRUCTION DEPARTMENT

Chief Academic Officer
Dr. Denise Greene

Administrative Assistant & Project Coordinator
*Katharine McCune

**Executive Director
Exceptional Children
& Pre-K Services**
Connie Crimmins

**Executive Director
of Curriculum &
Instruction**
Dr. Chris Gammon

**Executive Director
of Literacy**
Ambra Wilson

**Director of
Accountability &
Testing**
Crystal Vaught

**Director of
Multi-Tiered
System of Support**
Emily Myers

**Lead Office
Support**
VACANT

**Administrative
Assistant
Exceptional
Children Pre-K**
Emma Kaltz

**Lead Office
Support for CTE/
Cultural Arts**
Tami Zubler

**Director of Career
Technical Education/
Cultural Arts**
Shannon Braxton

**Beginning
Teacher / NBCT
Mentor Facilitator**
Rhonda Wood

**Student Talent
Development
Facilitator**
LaToya
Warren-Robinson

**ESL Facilitator /
Coordinator**
Emily Lewis

Director of Literacy
Mariah Morris

**CTE Curriculum &
Instructional
Management
Coordinator**
Melinda Fornes

**Pre-K-12 Science
Facilitator**
Jordan Hope

**Pre-K-12 Math
Facilitator**
Jennifer Parker

**Pre-K Social Studies
& Civic Engagement
Facilitator**
VACANT

*Staff indicated in blue
directly support schools.*

**Director of
Exceptional Children
& Pre-K Services**
Maryellen Gollnick

**Exceptional Children
Instructional Coach**
January Bowles

**Pre-K Program
Specialist**
Michelle Meade

**Exceptional Children
Pre-K Program
Specialist**
Thea Wilson

**Exceptional
Children Program
Specialist -
Elementary**
VACANT

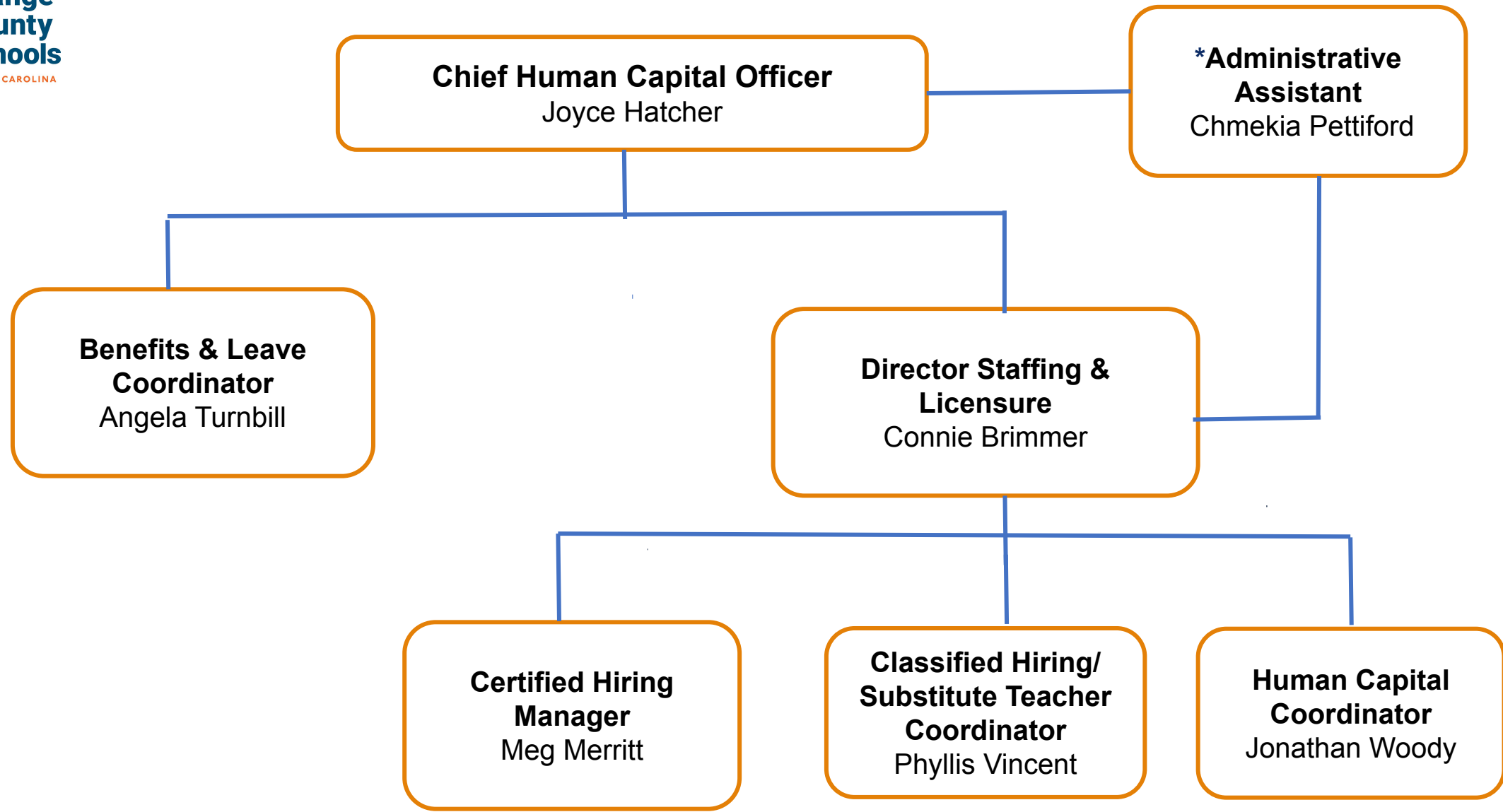
**Exceptional
Children Program
Specialist**
Jessica Barr

**Exceptional
Children Program
Specialist -
Secondary**
Jennifer Kelly

*position shared with Chief of Schools & Achievement Officer



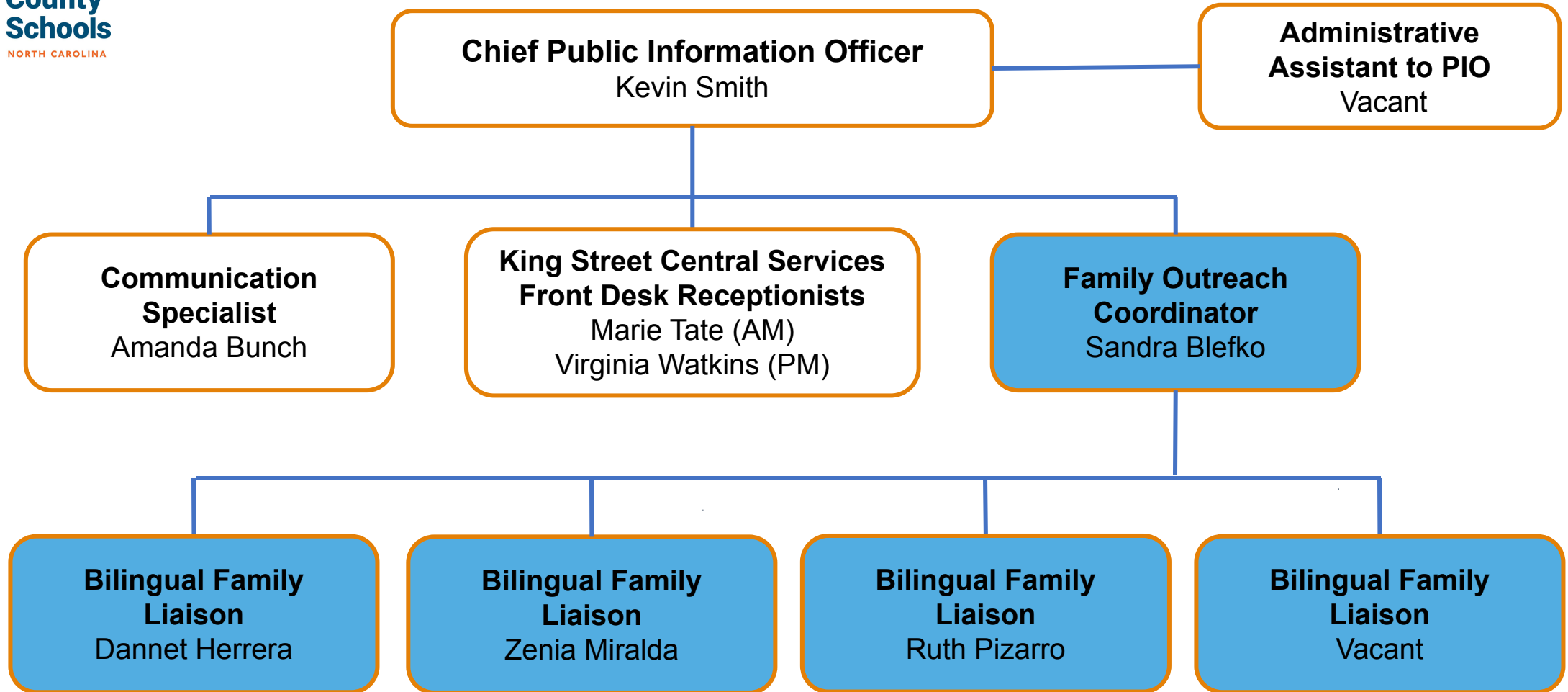
HUMAN CAPITAL DEPARTMENT



*supports Chief Finance Officer as needed



COMMUNICATIONS & FAMILY ENGAGEMENT DEPARTMENT



Staff indicated in blue directly support schools.